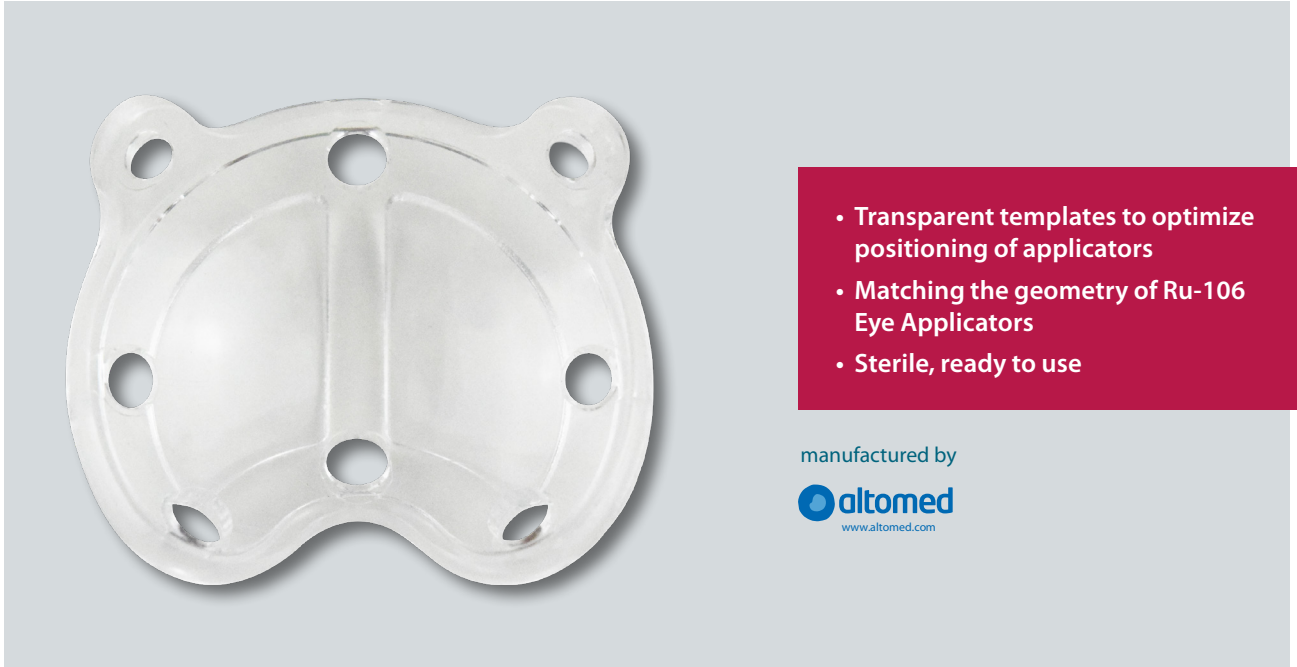
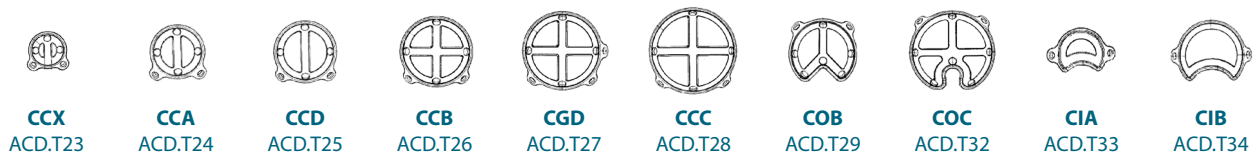


# Damato Ruthenium Plaque Templates



- Transparent templates to optimize positioning of applicators
- Matching the geometry of Ru-106 Eye Applicators
- Sterile, ready to use

manufactured by  
  
[www.altomed.com](http://www.altomed.com)



## Order Numbers and Compatibility with Ru-106 Eye Applicator Types

Order No.	Product Name	For Use with Item No.*
ACD.T23	Damato Ruthenium Plaque Template CCX	Ru6.A03
ACD.T24	Damato Ruthenium Plaque Template Small	Ru6.A04
ACD.T25	Damato Ruthenium Plaque Template CCD	Ru6.A05
ACD.T26	Damato Ruthenium Plaque Template Medium	Ru6.A06
ACD.T27	Damato Ruthenium Plaque Template CGD	Ru6.A07
ACD.T28	Damato Ruthenium Plaque Template Large	Ru6.A08
ACD.T29	Damato Ruthenium Plaque Template COB	Ru6.A09
ACD.T32	Damato Ruthenium Plaque Template COC	Ru6.A12
ACD.T33	Damato Ruthenium Plaque Template CIA	Ru6.A13
ACD.T34	Damato Ruthenium Plaque Template CIB	Ru6.A14

## Technical Details

The Damato Ruthenium Plaque Templates are made from transparent PMMA. They are supplied sterile, individually packaged in double-layered, sealed bags, with ten templates of the same model per carton.

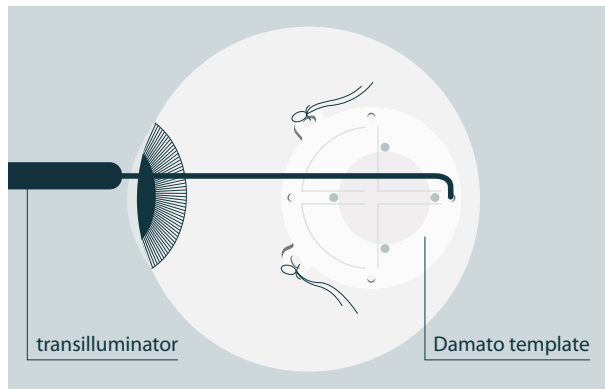
\*Eckert & Ziegler BEBIG product

## Application

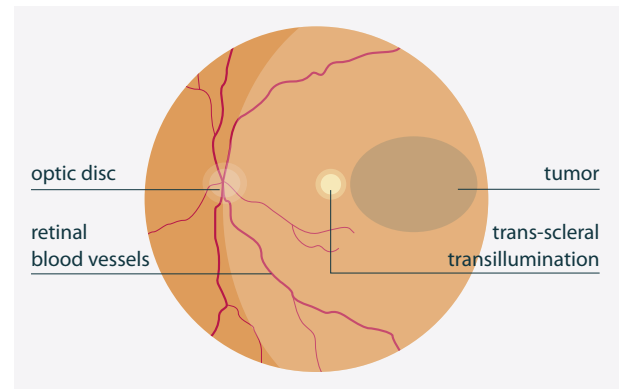
Damato Ruthenium Plaque Templates help to achieve accurate positioning of Ru-106 Eye Applicators. After localizing the tumor by transillumination the template is sutured to the sclera with bows. The transparent templates have up to 6 holes strategically placed at points corresponding to the edge of the radioactive surface of each associated applicator.

The surgeon slides the right-angled transilluminator down a groove until it clicks into a perforation, then

performs binocular indirect ophthalmoscopy to elicit the 'sunset sign', assessing the distance between the light spot and the tumor margin, ensuring that the tumor is completely covered by the template. The procedure can be repeated to check all tumor margins. If necessary, the template's position is adjusted using the transilluminator as a hook. Ink marks are then made on the sclera at the edge of the template to guide positioning of the Ru-106 Eye Applicator.



Perforation of the template



Binocular indirect ophthalmoscopy

Stålhammar G, Seregard S, Damato B. Uveal melanoma. Brachytherapy. Damato B, Singh AD (Eds.). Clinical Ophthalmic Oncology: Uveal tumors (3rd Ed). Springer Nature, Cham. 2019:201-218.

Rospond-Kubiak I, Kociecki J, Damato B. Clinical evaluation of a paper chart for predicting ruthenium plaque placement in relation to choroidal melanoma. Eye (Lond). 2018 Feb;32(2):421-425. doi: 10.1038/eye.2017.205. Epub 2017 Sep 29. 28960216

Russo A, Laguardia M, Damato B. Eccentric ruthenium plaque radiotherapy of posterior choroidal melanoma. Graefes Arch Clin Exp Ophthalmol. 2012 Oct;250(10):1533-40. doi: 10.1007/s00417-012-1962-3. Epub 2012 Feb 23. 22354369

Damato B, Patel I, Campbell IR, Mayles HM, Errington RD. Visual acuity after Ruthenium-106 brachytherapy of choroidal melanomas. Int J Radiat Oncol Biol Phys. 2005 Oct 1;63(2):392-400. 15990248

Damato B, Patel I, Campbell IR, Mayles HM, Errington RD. Local tumor control after <sup>106</sup>Ru brachytherapy of choroidal melanoma. Int J Radiat Oncol Biol Phys. 2005 Oct 1;63(2):385-91. 15913907

The mentioned products are not available in all markets. Please contact your local Eckert & Ziegler BEBIG representative for further information.

### Manufacturer and Sales in UK:

**Altomed**  
2 Witney Way, Boldon  
Tyne and Wear, NE35 9PE  
England

Phone +44 191 519 0111  
sales@altomed.com

### Sales outside the UK:

**Eckert & Ziegler BEBIG GmbH**  
Robert-Rössle-Str. 10  
13125 Berlin, Germany

Phone +49 30 94 10 84 130  
Fax +49 30 94 10 84 112  
info@bebig.com

www.medical.ezag.com